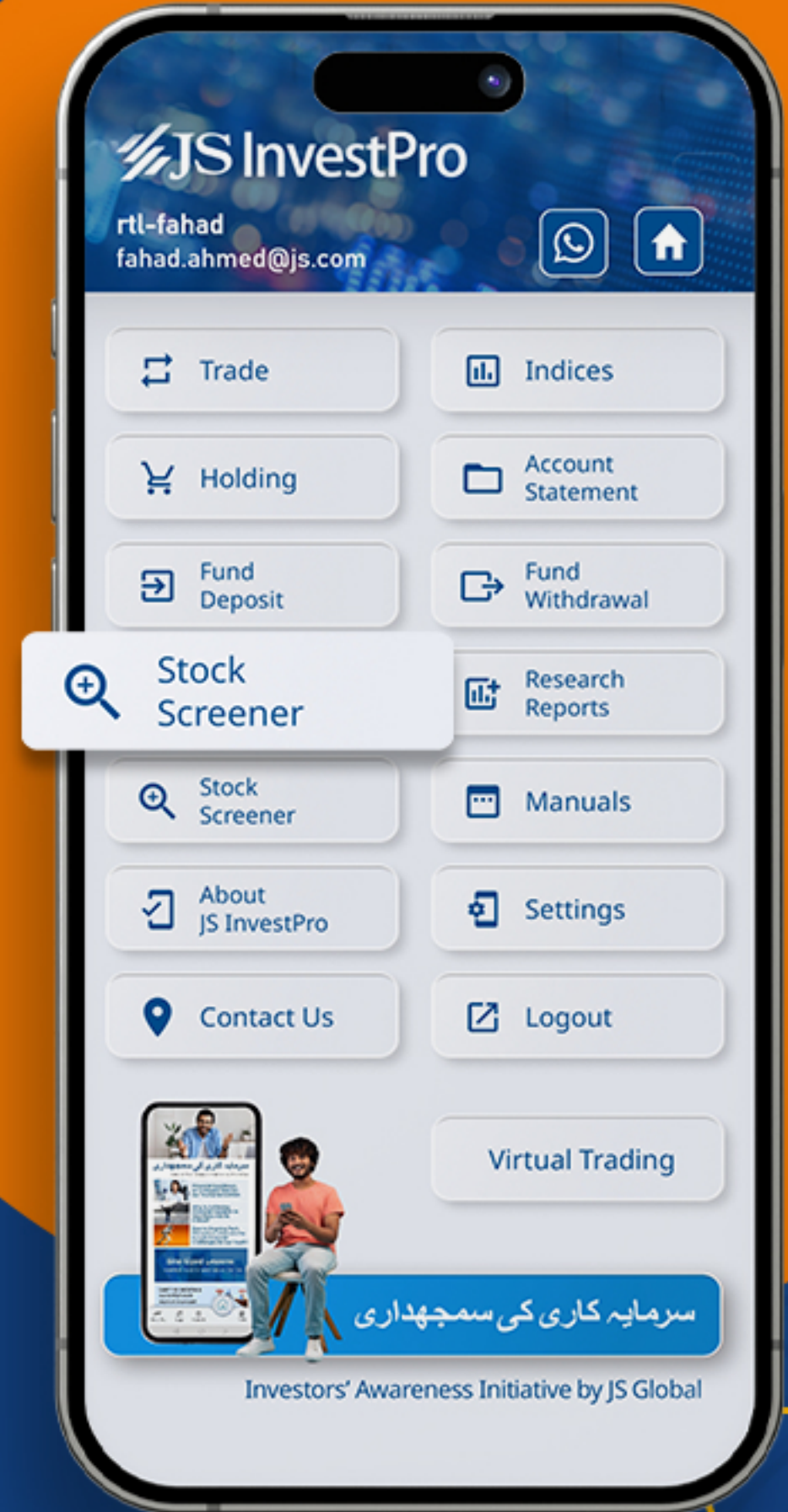




User Guide

Stock Screener

The Stock Screener can be accessed from the main menu of **JS InvestPro**



The Overview section contains basic information about:

- Stocks
- Sector
- Close
- Change
- Volume
- Price earnings ratio %
- Earnings per share

You can arrange all the columns in ascending or descending order for ease of use.

This screen features 10 default columns, but you can add or delete columns according to your analysis needs by following these steps:

- Click on "Columns".
- Choose the parameters you wish to add.
- Click on "Save" to confirm your selection.

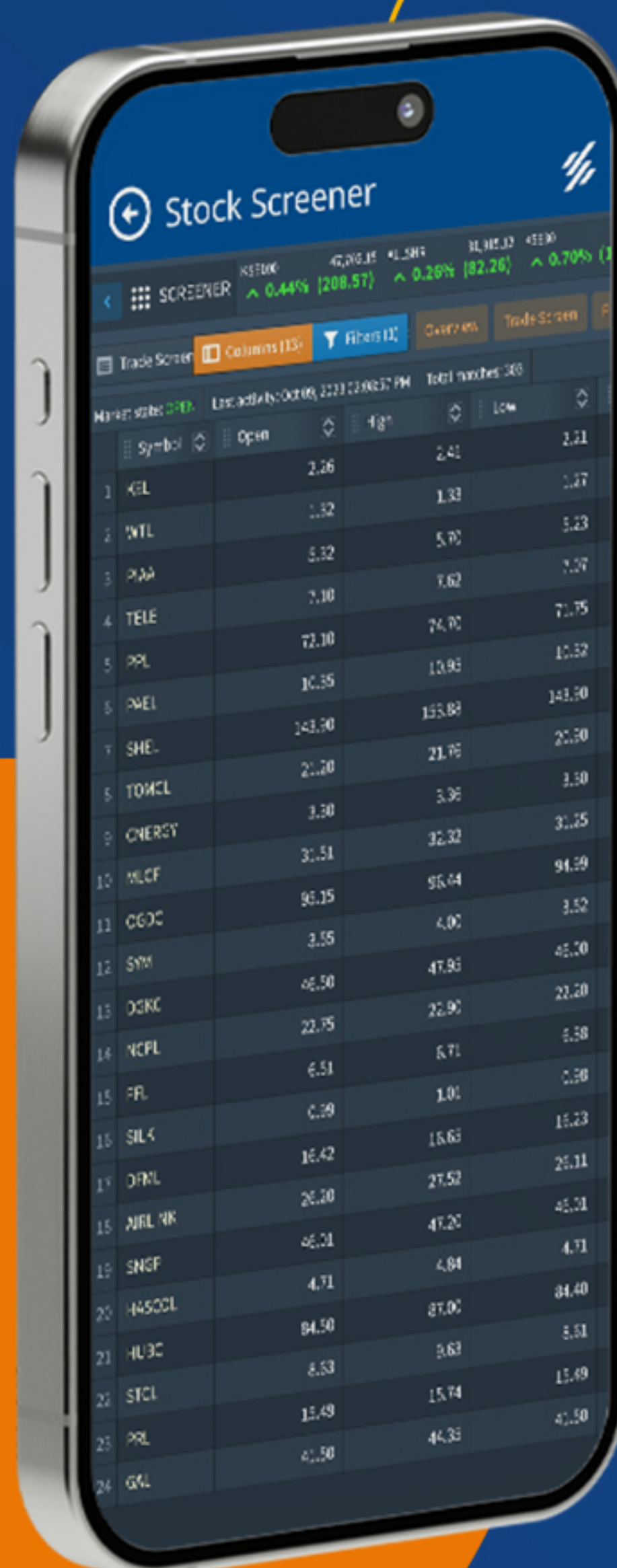


Trade Screen tab contains all the shares actively traded during the day in descending order. By default it contains regular screen columns; user can increase or decrease the number of columns as per their requirements, by clicking on Columns Tab.

A personalized trade screen can be saved in the system by following procedure

Click on the "Trade Screen" drop-down menu.
Select "My Trade Screen."

Choose the stocks to be added to the customized trade screen.
Save your changes.

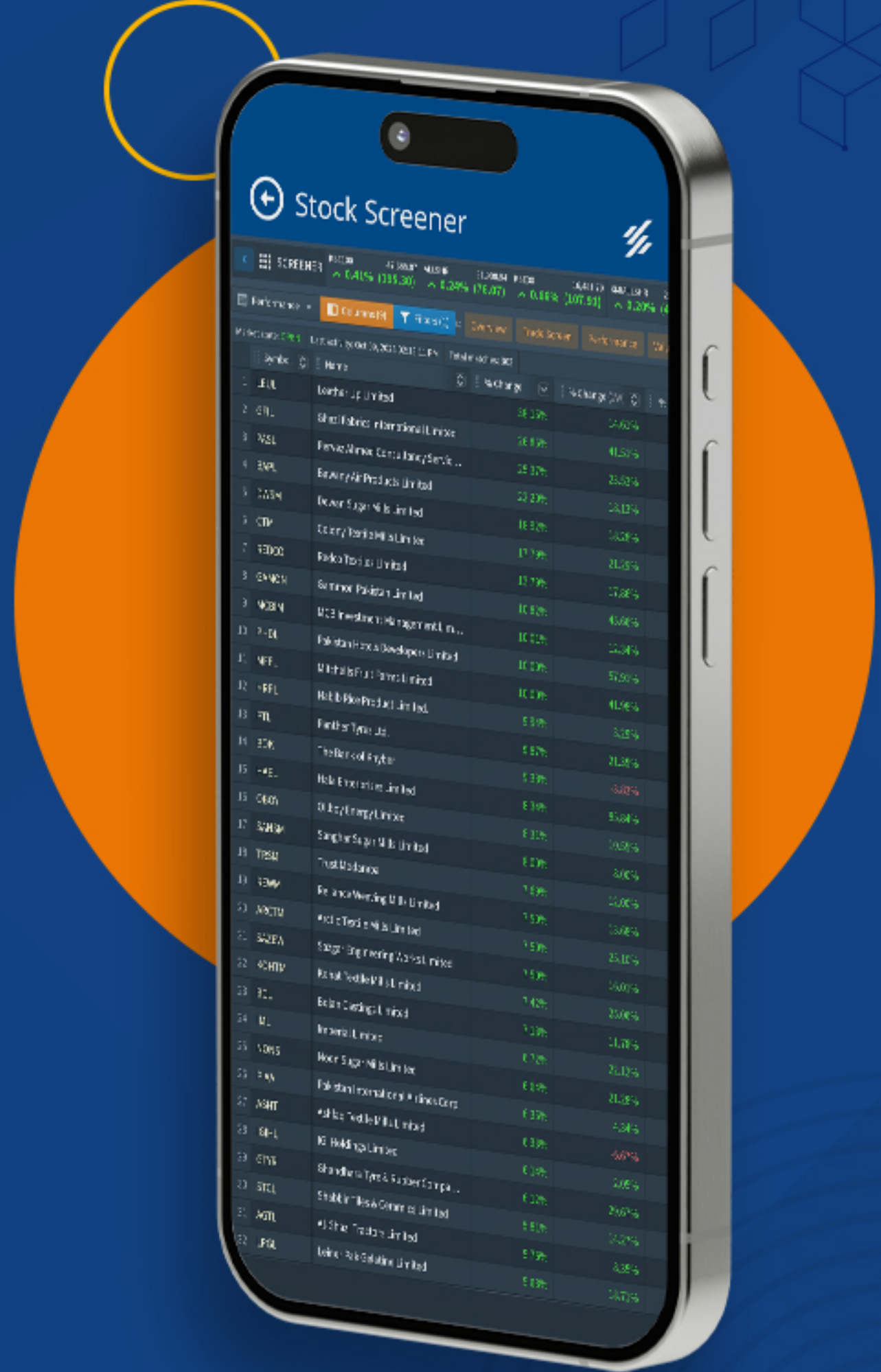


The image shows a smartphone displaying the 'Stock Screener' application. The screen shows a table of stock data with columns for Symbol, Open, High, and Low. The 'Trade Screen' tab is highlighted in the top navigation bar, and a yellow circle is drawn around it. The table lists 24 stocks, including KGL, WTL, PAA, TELE, PPL, PWEL, SHE, TOMCL, ENERGY, MLCF, CGOC, SYM, OROC, NCPL, PFL, SILK, OPNL, NPL NR, SNGF, H4SOCL, HUCO, STCL, PRL, and GGL.

Symbol	Open	High	Low
1 KGL	2.26	2.41	2.21
2 WTL	1.32	1.33	1.27
3 PAA	5.12	5.70	5.23
4 TELE	7.10	7.62	7.07
5 PPL	72.10	74.70	71.75
6 PWEL	10.35	10.93	10.32
7 PWEL	143.90	153.84	143.90
8 SHE	21.20	21.75	20.90
9 TOMCL	3.30	3.36	3.30
10 ENERGY	31.51	32.32	31.25
11 MLCF	95.15	95.44	94.99
12 CGOC	3.55	4.00	3.52
13 SYM	45.50	47.93	45.50
14 OROC	22.75	22.90	22.20
15 NCPL	6.51	6.71	6.50
16 PFL	0.39	1.01	0.30
17 SILK	16.42	16.63	16.23
18 OPNL	25.20	27.52	25.11
19 NPL NR	45.01	47.20	45.01
20 SNGF	4.71	4.84	4.71
21 H4SOCL	84.50	87.00	84.40
22 HUCO	6.53	6.63	6.51
23 STCL	15.49	15.74	15.49
24 PRL	41.50	44.33	41.50
25 GGL			

Performance Tab contains information about percentage return of stocks for underlying period such as

- % Change 1W
- % Change 1M
- % Change 1Y
- % Change YTD (year to date)
- % Change FY (for financial year)
- Beta



Valuations Tab consists of:

- Close price
- Market capitalization
- EPS (TTM) (earnings per share)
- BV/Sh (TTM) (book value per share)
- NA/Sh (TTM) (net assets per share)

Margins tab contains income statement items of any particular script

GPM (gross profit margin)

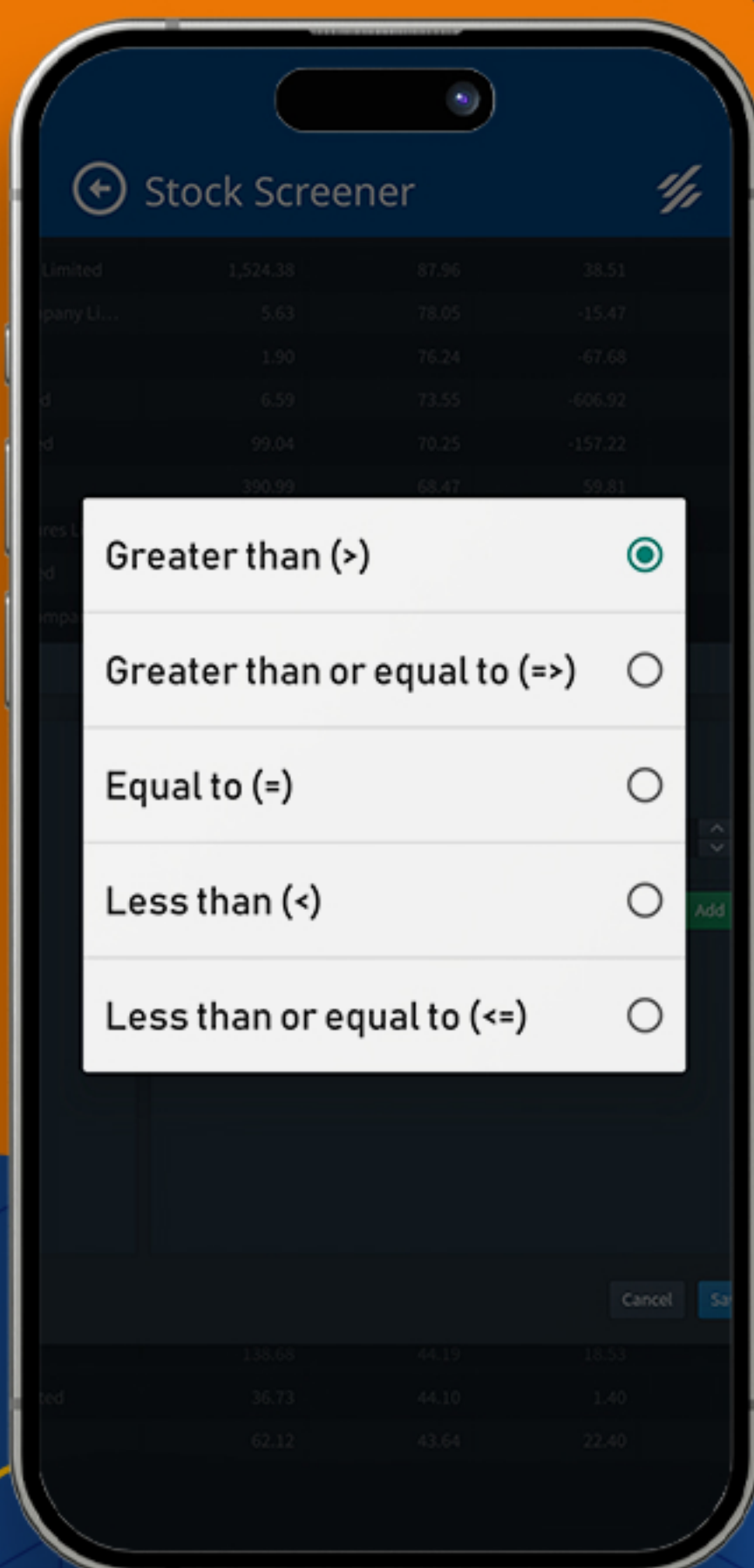
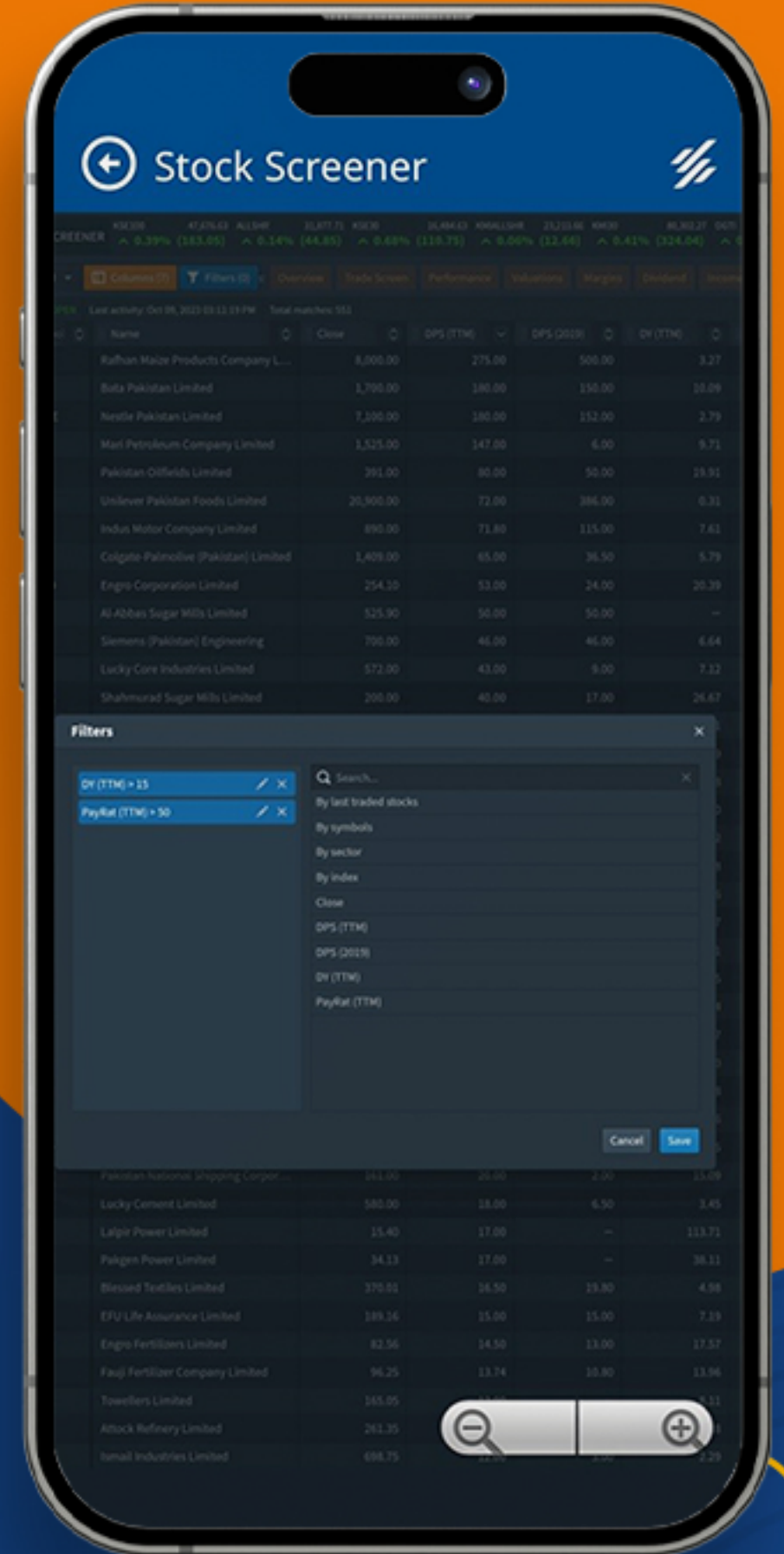
NPM (net profit margin)

PBTM (profit before tax margin)

OPM (operating profit margin)

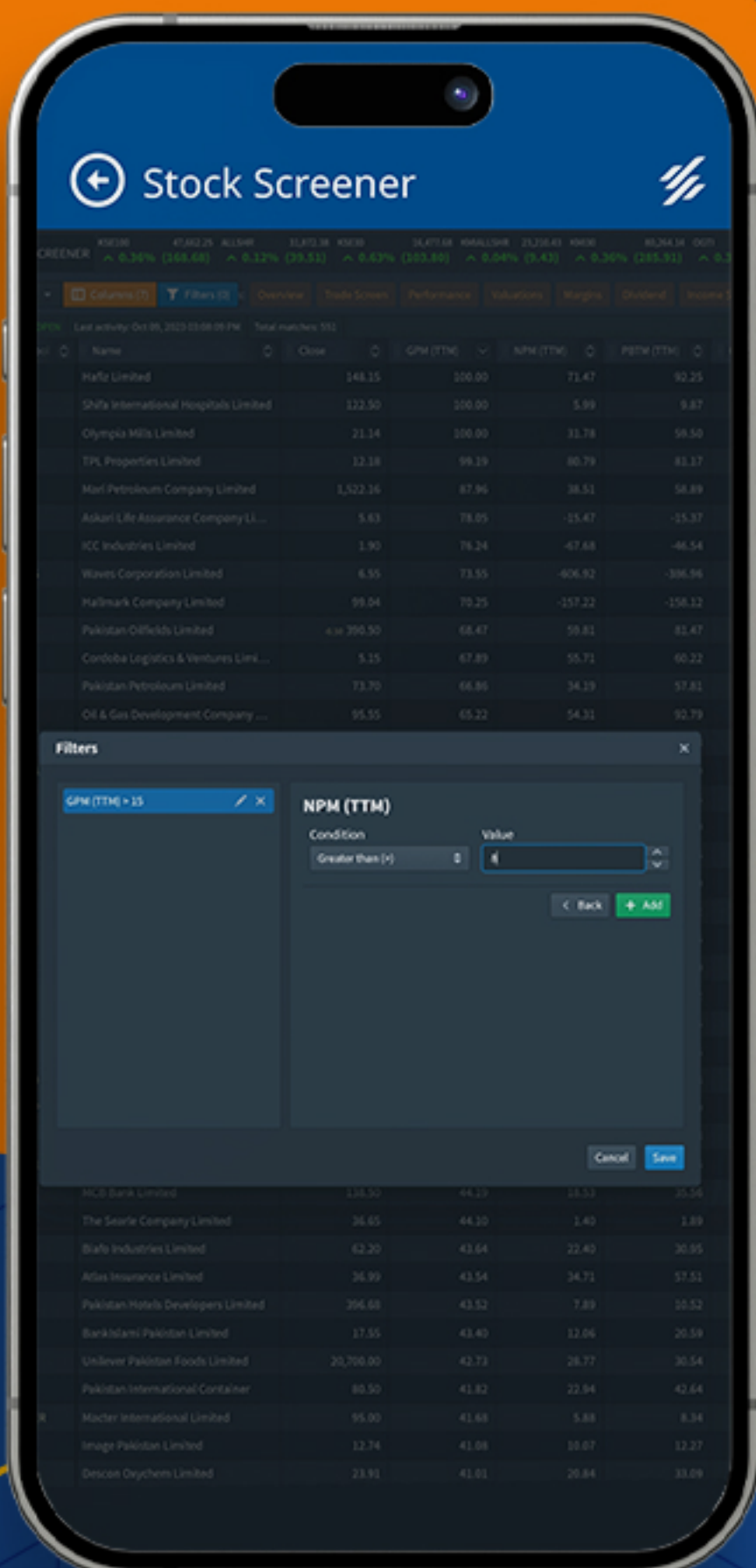
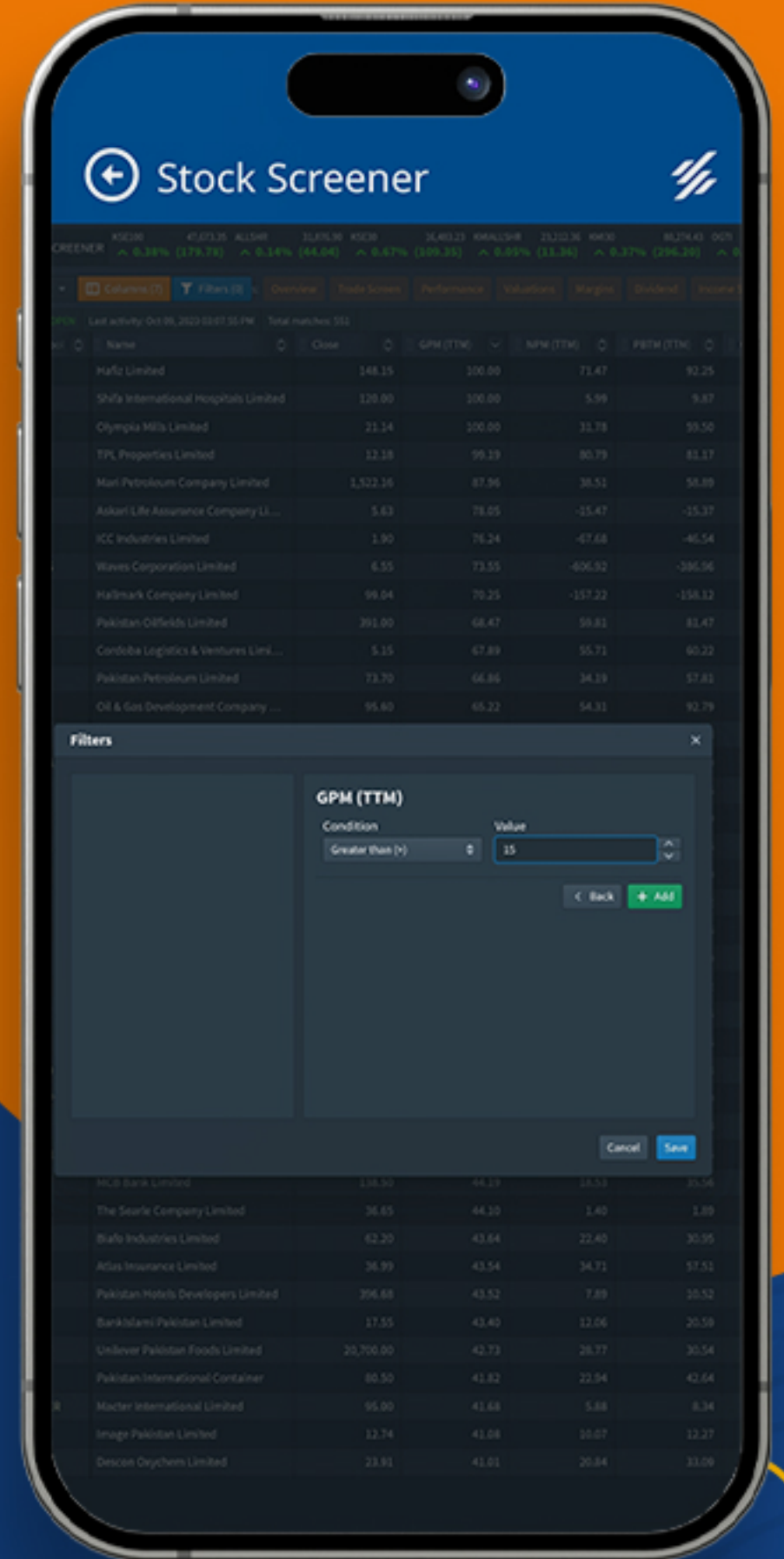


You can customize your stock search by selecting variables through the application of filters in the "**Margins**" tab.



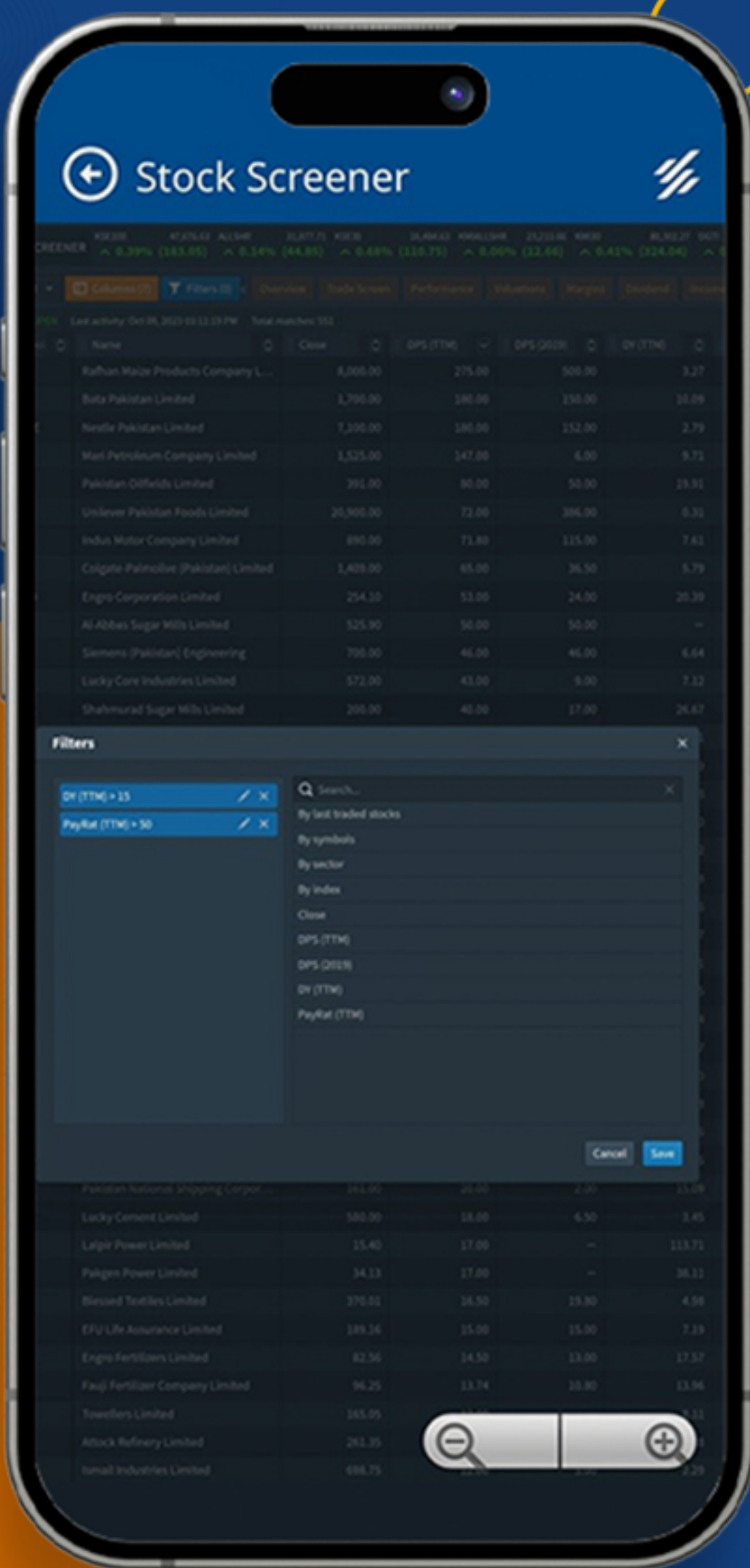
Like Gross profit margin (to be greater than, equal to, equal than and greater than, less than & equal to) with other different variables.

For example, if you want to select a stock with a gross profit margin



of 15% or higher and a net profit margin of 8% or higher.

The stock screener will display all the stocks which fall under the said criteria.

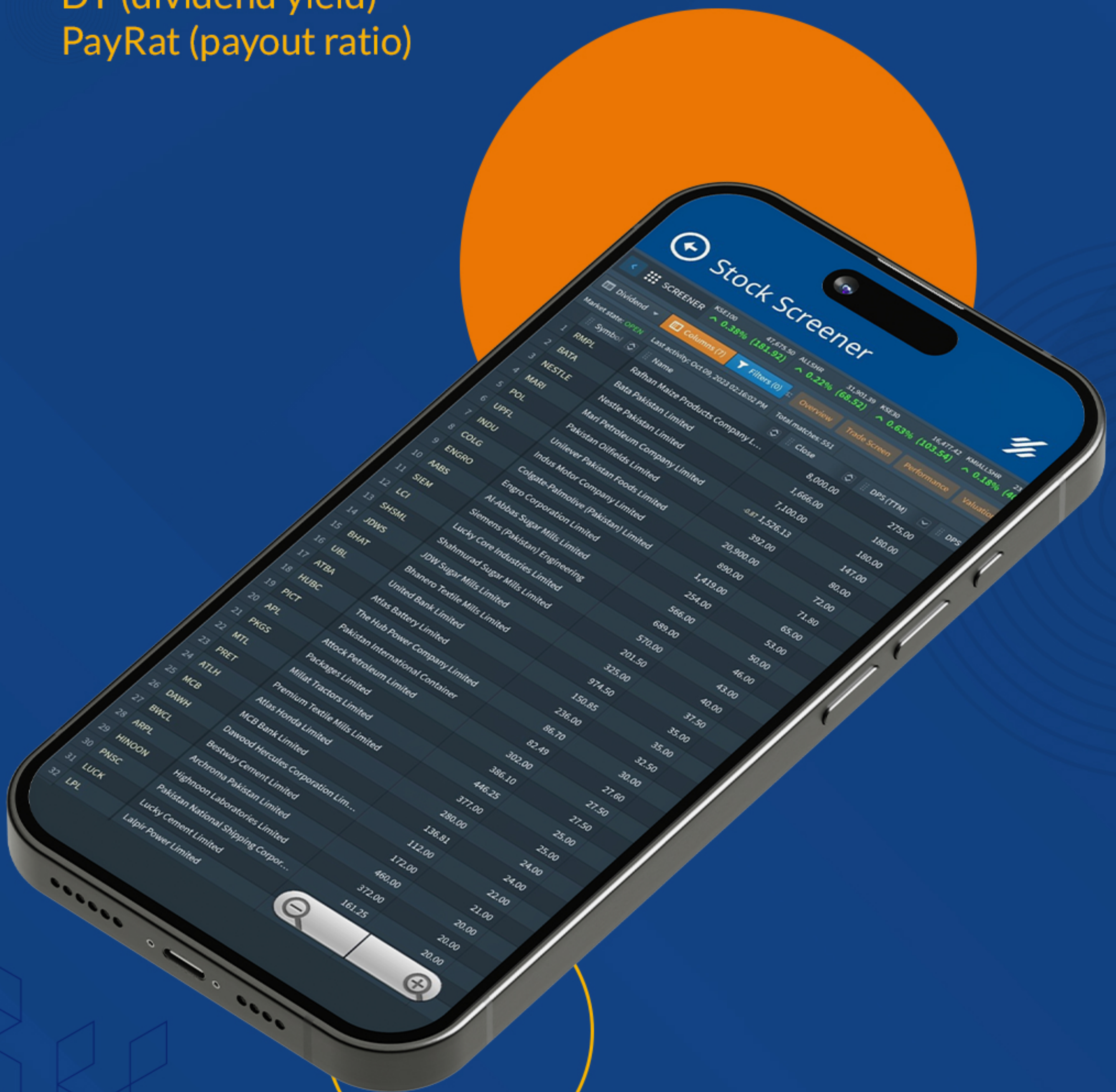


Dividend tab contains information relevant to payout like:

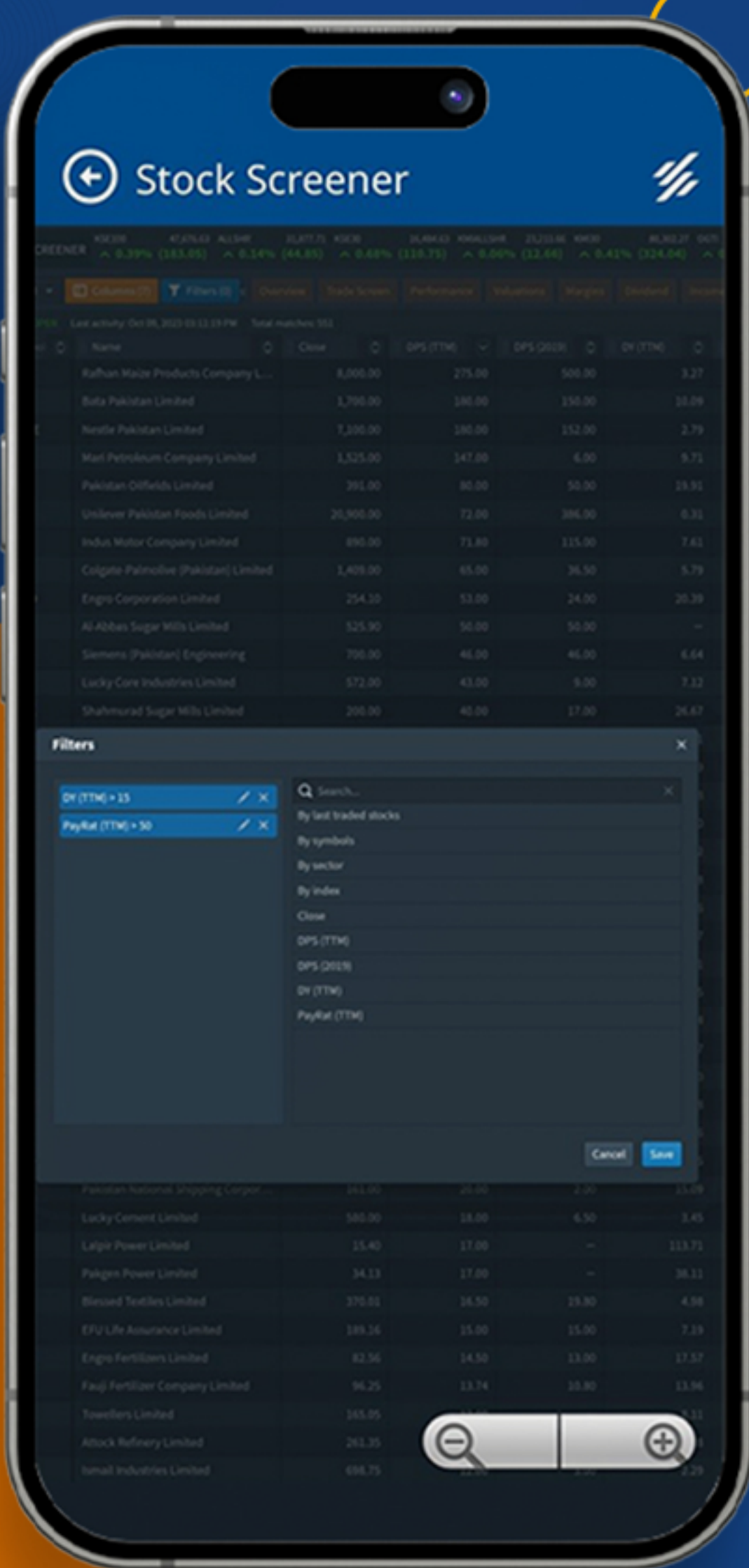
DPS (dividend per share in rupees)

DY (dividend yield)

PayRat (payout ratio)



The stock screener will display all the stocks which fall under the said criteria.



Income Statement Tab consists of items relating to income statement and consists of:

EPS

SALES

PAT (profit after tax)

